



# TECHNICAL UNIVERSITY OF MOMBASA

---

FACULTY OF ENGINEERING AND TECHNOLOGY

DEPARTMENT OF BUILDING & CIVIL ENGINEERING

UNIVERSITY EXAMINATION FOR:

**CERTIFICATE IN BUILDING**

**EBC1202 : CERTIFICATE IN QUANTITY SURVEYING 1I**

**END OF SEMESTER EXAMINATION**

**SERIES: AUGUST 2019**

**TIME: 2 HOURS**

**DATE: 2 AUGUST 2019**

## **Instructions to Candidates**

You should have the following for this examination

*-Answer Booklet,*

*-examination pass*

*-student ID*

*- Scientific Calculator*

This paper consists of five questions.

Attempt any THREE questions.

**Do not write on the question paper.**

**QUESTION ONE ( 20 Marks)**

Briefly explain the following parts of the bill of quantities

- ( i ) Title and signature
- (ii ) Preliminaries
- (iii ) Preambles (specifications )
- (iv) Measured works
- (v) Prime cost and provisional sums

**QUESTION TWO ( 20 Marks)**

Take off quantities for a man –hole shown in figure **No.1**

Man-hole schedule

Internal Size	Cover level	Invert level	Invert depth	Step irons
1200x750	100.00	98.90	1.10	4

**QUESTION THREE (20 Marks)**

Take off quantities for the internal door shown in figure **No.2**

**QUESTION FOUR (20 Marks)**

Take off quantities for walling above D.P.C in figure **No.3**

**QUESTION FIVE (20 Marks)**

Take of quantities for the measurement of site clearance work shown in

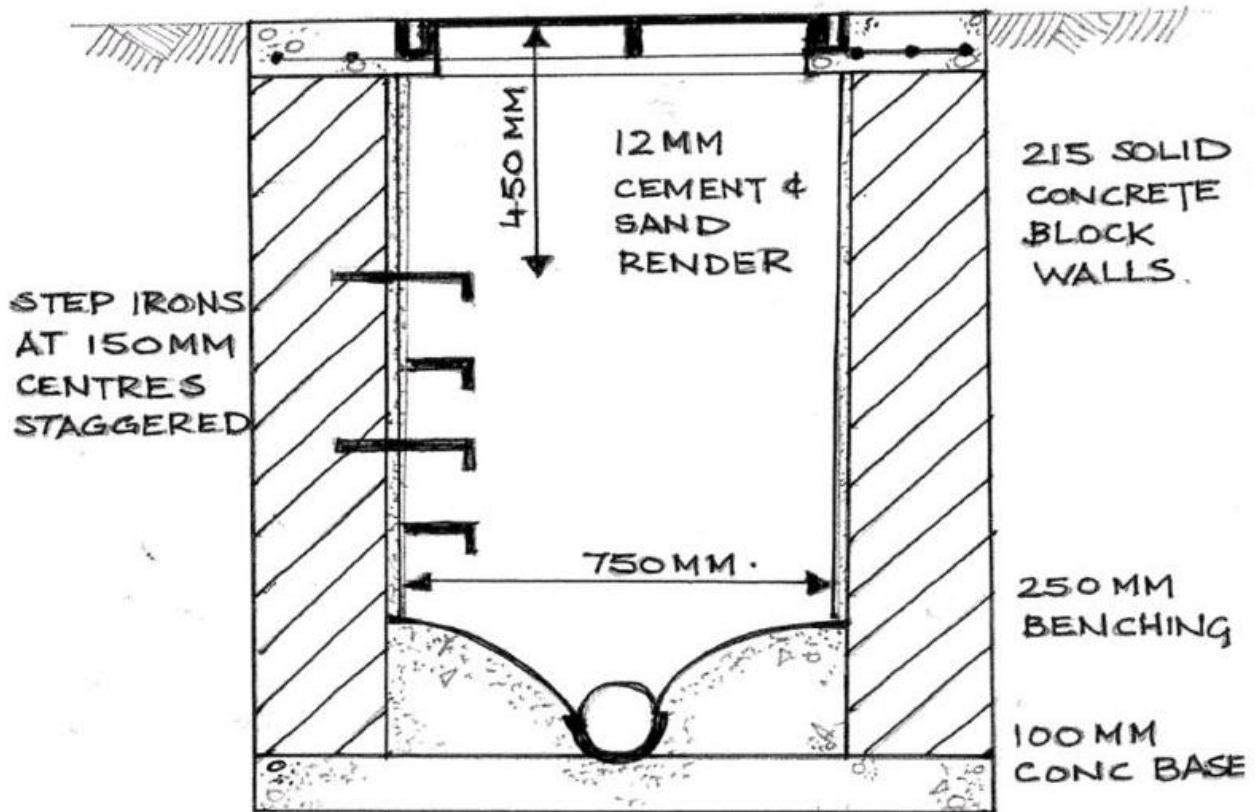
figure **No. 4** using CESMM

# Manholes

A 393 MESH

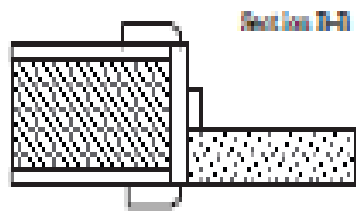
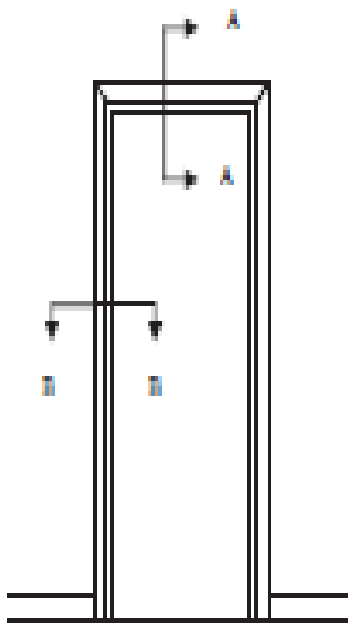
BELOW GROUND DRAINAGE

COVER & FRAME  
100 MM CONC. COVER



TYPICAL MANHOLE  
DETAIL

DRAWING 1



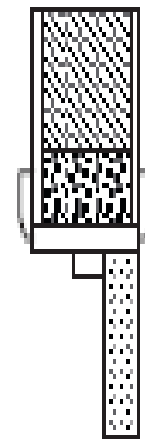
850 x 2040 x 40 mm thick John Goss  
interior quality plywood faced flush  
door

150 x 22 mm wrought softwood lining

18 x 25 mm wrought softwood stop

25 x 75 mm wrought softwood  
chamfered on hinge

KTS on a cast undercoat on finishing  
coat



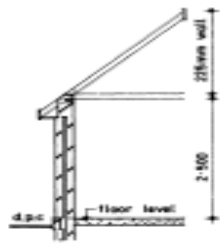
100 mm blockwork

100 x 75 mm precast  
concrete lintel

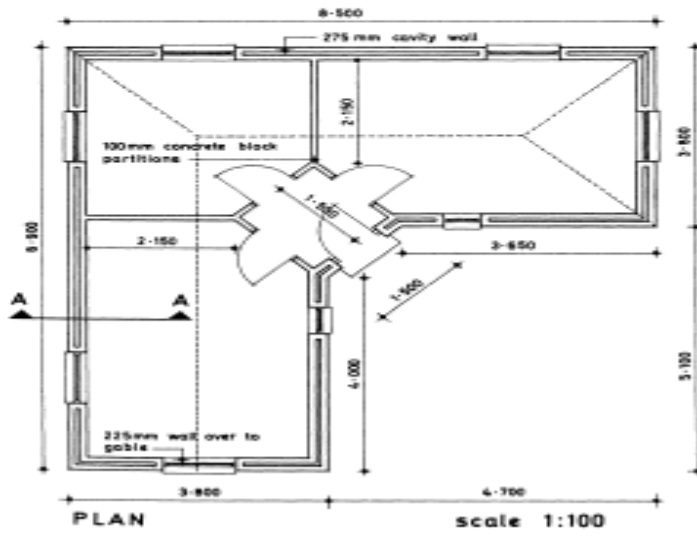
18 mm plaster both  
sides

Section A-A

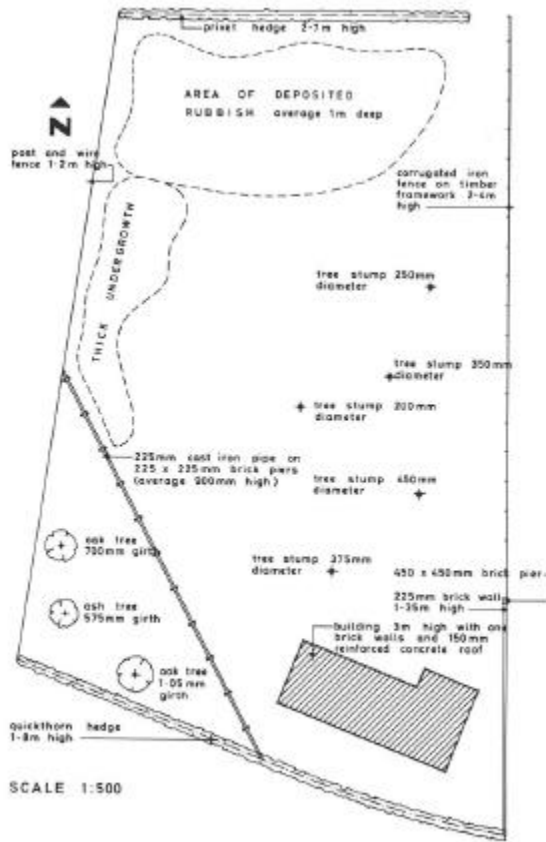
**DRAWING NO 2**



SECTION A-A



DRAWING 3



DRAWING 4