



TECHNICAL UNIVERSITY OF MOMBASA

FACULTY OF ENGINEERING AND TECHNOLOGY

DEPARTMENT OF ARCHITECTURE & BUILT ENVIRONMENT

UNIVERSITY EXAMINATION FOR:

BACHELOR OF ARCHITECTURAL STUDIES/BACHELOR OF
ARCHITECTURE

EAR 4202: HISTORY AND THEORY OF ARCHITECTURE III

SPECIAL/SUPPLEMENTARY EXAMINATION

SERIES: SEPTEMBER 2018

TIME: 2 HOURS

DATE: Pick Date Sep 2018

Instructions to Candidates

You should have the following for this examination

-Answer Booklet, examination pass and student ID

This paper consists of **FIVE** questions. Attempt question ONE (Compulsory) and any other TWO questions.

Do not write on the question paper.

QUESTION ONE

- a) Describe Expressionist architecture (4 Marks)
- b) The Einstein tower in Potsdam-Berlin by Erich Mendelsohn, (1919-22) is a good example of Expressionist architecture. Explain (20 Marks)

QUESTION TWO

Using a specific building example, explain the 'Five Principles of modern architecture' as expounded by Le Corbusier (20 Marks)

QUESTION THREE

Using the Fagus Factory by Walter Gropius and Adolf Meyer's, explain New Objectivity Architecture (20 Marks)

QUESTION FOUR

The Falling Waters by Frank Lloyd Wright typifies Organic Architecture. Discuss. (20 Marks)

QUESTION FIVE

Compare and contrast Modernism and Post modernism

(20 Marks)

FIGURES



Figure 1 Einstein tower Exterior view, Potsdam-Berlin, by Erich Mendelsohn, 1919-22

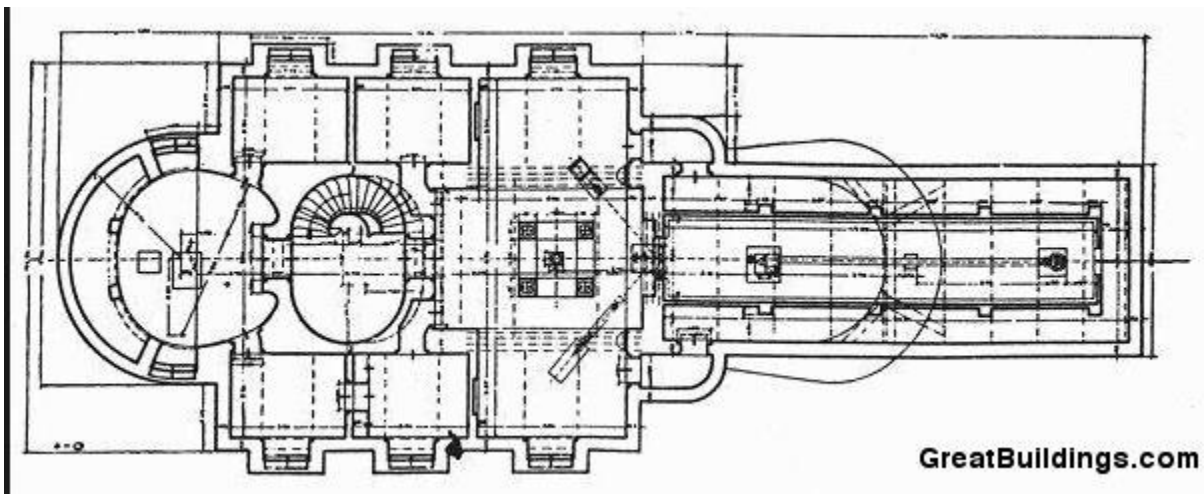


Figure 2 Einstein tower Floor plan, Potsdam-Berlin, by Erich Mendelsohn, 1919-22

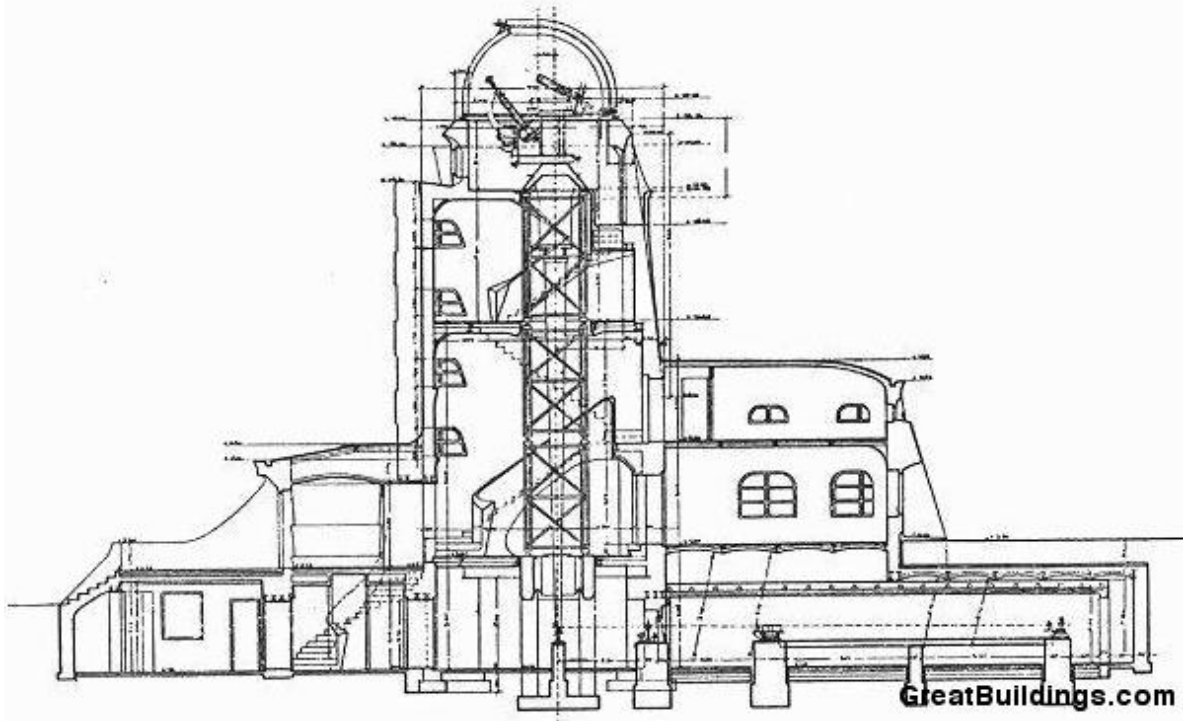


Figure 3 Einstein tower Section, Potsdam-Berlin, by Erich Mendelsohn, 1919-22



Figure 4 Fagus Factory Exterior by Walter Gropius and Adolf Meyer's, 1911-1913

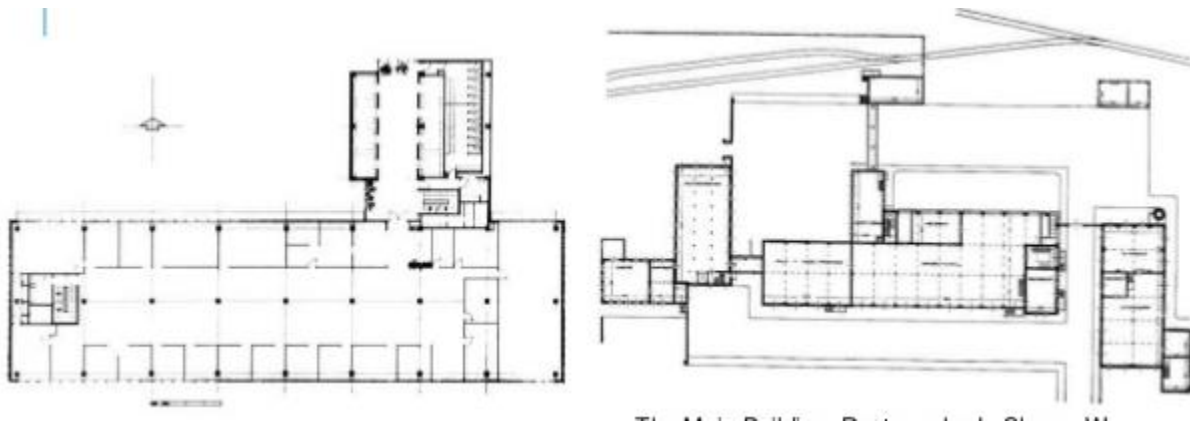


Figure 5 Fagus Factory floor plans by Walter Gropius and Adolf Meyer's, 1911-1913. Office block and the main building.



Figure 6 Falling Waters Exterior view by Frank Lloyd Wright

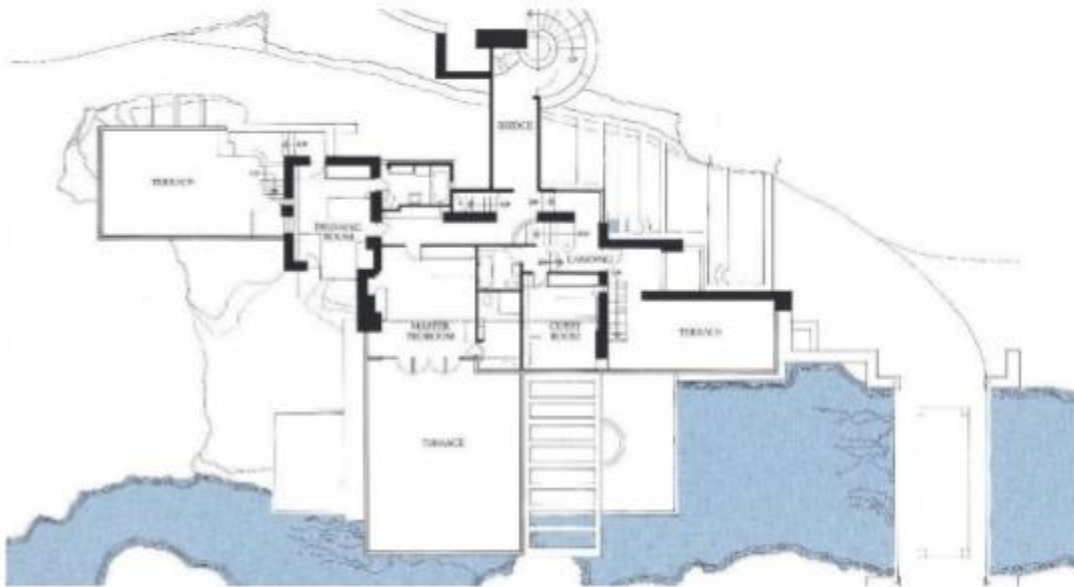


Figure 7 Falling Waters Floor plan by Frank Lloyd Wright

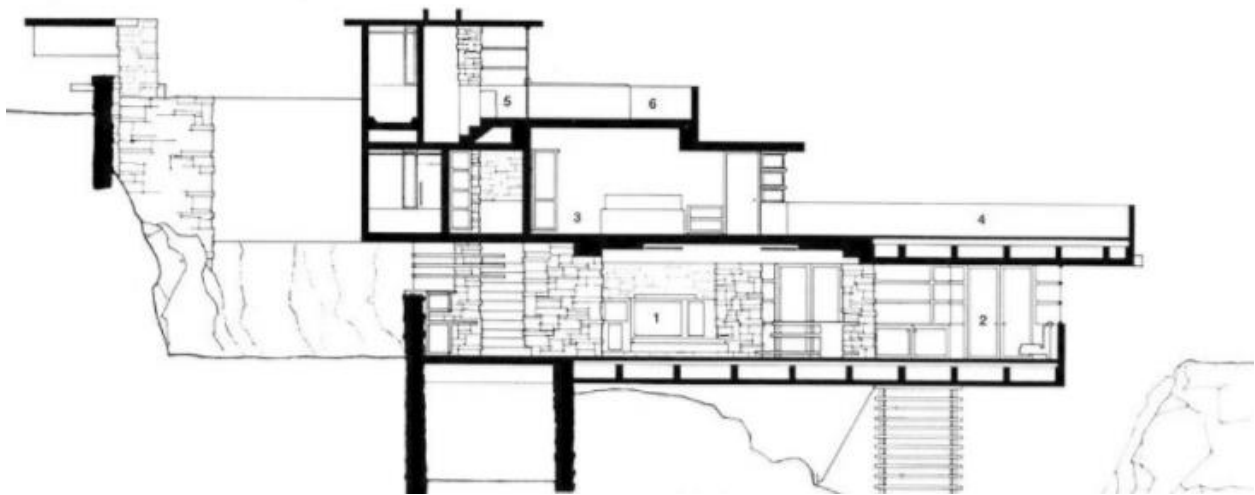


Figure 8 Falling Waters Section by Frank Lloyd Wright