



**TECHNICAL UNIVERSITY OF MOMBASA**

**SCHOOL OF BUSINESS -DEPARTMENT OF MANAGEMENT SCIENCE  
END OF SEMESTER EXAM           2 HRS  
YEAR 2 SEMESTER 2  
DIPLOMA IN SHIPPING  
“B”- PAPER**

BSP 2209: TANK CHARTING

Answer ALL parts of the question.

Your Suezmax vessel has been voyage chartered out to oil major to load a full cargo of crude oil two grades at two offshore loading facilities in Angola West Africa in January for discharge in Fos Lavera in France. Your last cargo was a full cargo Bonny Light Crude Oil. To ensure the safety of your vessel and the proper load, carriage and discharge of the cargo meeting International and charterers requirements;

- a) What information must you find out and what preparations would you take before loading?           (8 marks)
- b) What precautions would you take during and at completion of loading and on the loaded passage?   (8 marks)
- c) What action would you take at the discharge port? (4 marks)

Use the world map to show detail of the voyage.

2. You've noticed that shippers often ask you to clarify different 'types' of freight and so have always come across such expressions such as advance; lump sum; pro-rata; back and dead.

Required:

Write short definitions of each of those freight expressions, analyzing the implication for each, if any, for shippers, not shipowners/charterers; Advance, Lump sum, Pro Rata, Back and Dead

Q. 3. A dispute has arisen over some relatively minor demurrage charges and your company has asked you to advise on whether to refer the dispute to arbitration, or to choose litigation. Analyze the advantages and disadvantages of each option, make a decision and justify your choice.

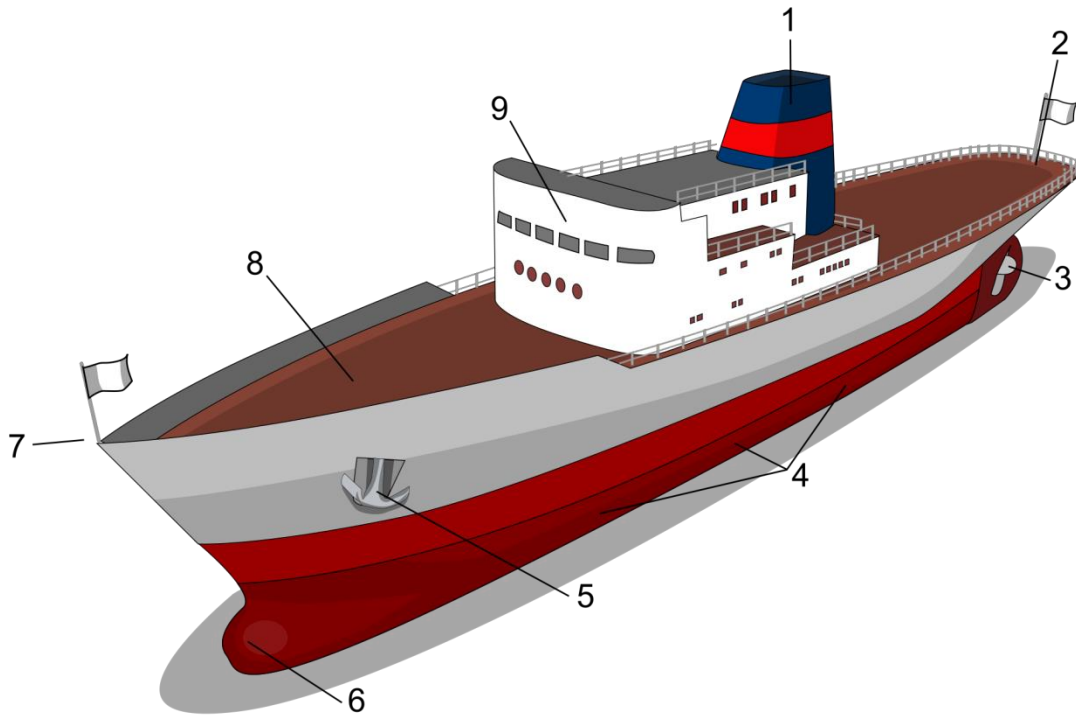
- 4. a) State three reasons why it is important to use bill of lading form stating the importance of its correct completion.

b) Explain what is required on a bill of lading?

c) Explain any three of the following types of bills of lading.

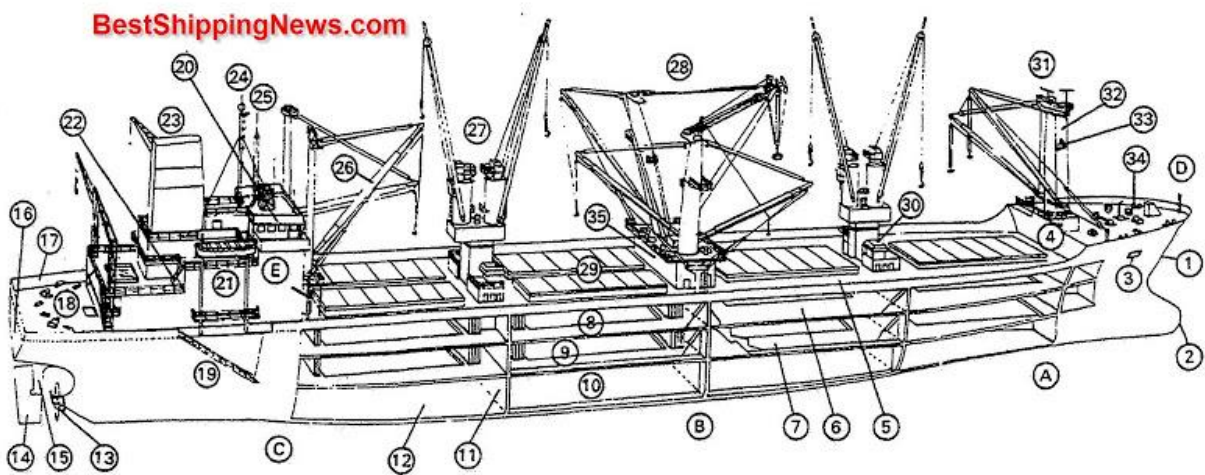
- i. Straight Bill of Lading
- ii. Order Bill of Lading
- iii. Negotiable Bill of Lading
- iv. Claused Bill of Lading
- v. Electronic Bill of Lading

5. a) Name parts of the ship numbered 1 – 9 in "A" ship and (9 marks)

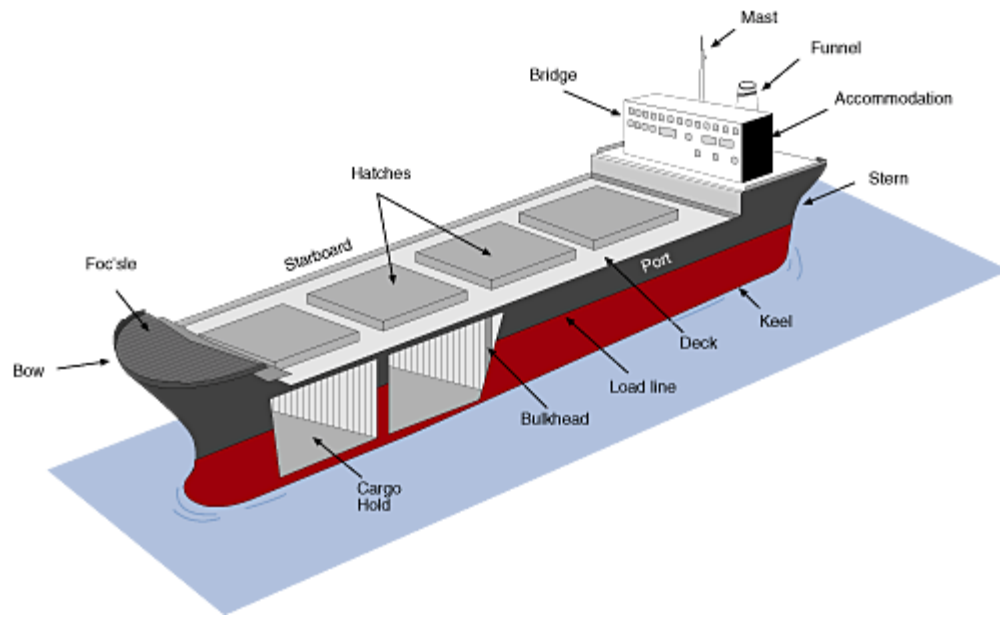


"A" ship

A – E in "B" ship (5 marks)



"B" ship.



In ship "C", list as many statements of facts as you can from the diagram. (6 marks)