



TECHNICAL UNIVERSITY OF MOMBASA

FACULTY OF ENGINEERING AND TECHNOLOGY

DEPARTMENT OF BUILDING AND CIVIL ENGINEERING

DIPLOMA IN CIVIL ENGINEERING

EBC 2305: MEASUREMENT OF BUILDING WORKS

END OF SEMESTER EXAMINATION

SERIES –APRIL 2016

TIME: 2 HOURS

INSTRUCTIONS TO CANDIDATES

You should have the following for this examination

- Answer booklet
- Pocket calculator
- Standard method of measurement for building works

This paper consists of **FIVE** questions

Answer any **THREE** questions

Maximum marks for each part of a question are as shown



QUESTION ONE

Take off all quantities for the substructures works shown in drawing no 01. **(20marks)**

QUESTION TWO

Take off all quantities for the flush door shown in drawing no 02 including adjustments **(20marks)**

QUESTION THREE

Take off all quantities for the flat roof shown in drawing no 03 including rain water goods. **(20marks)**

QUESTION FOUR

a) Outline FOUR uses of a bill of quantities **(6marks)**

b) Describe the following types of Bills of quantities

- i) Elemental
- ii) Traditional
- iii) Operational **(6marks)**

c) With suitable illustrations explain what is meant by running through dimension **(3marks)**

d) Describe the uses of a dimension paper **(5marks)**

QUESTION FIVE

i) Outline the term “variations” **(2marks)**

ii) Outline any ‘four’ processes of valuing variations **(6marks)**

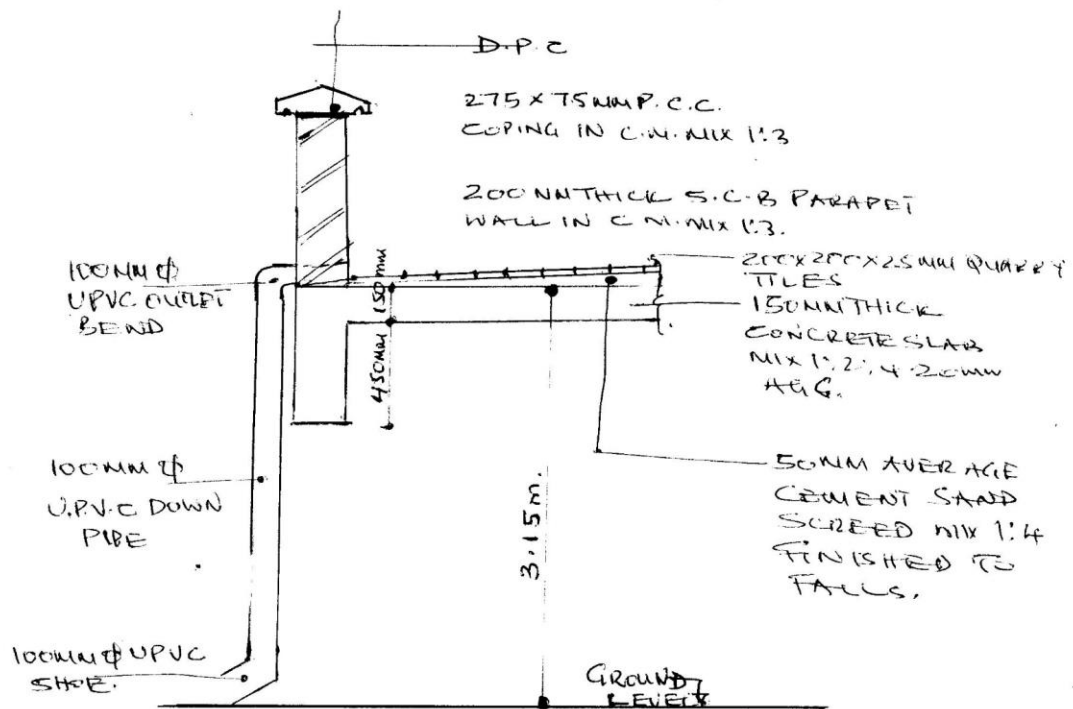
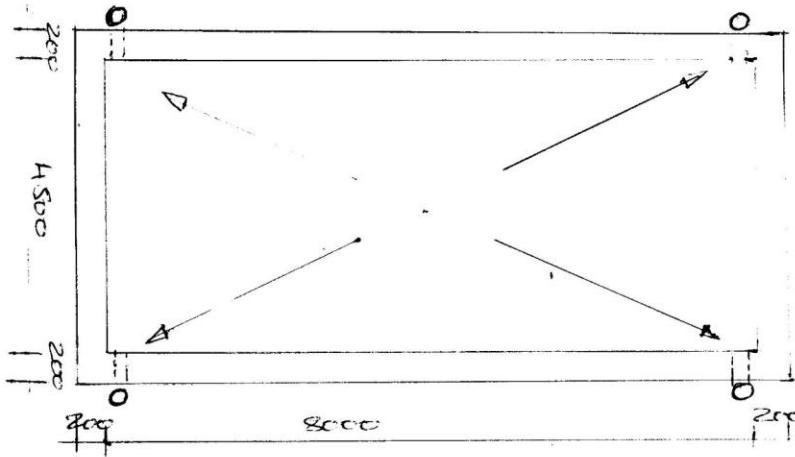
iii) Describe any FOUR contract documents used in building contracts. **(12marks)**





SGS ISO 9001:2008 Certified

FLAT CONCRETE ROOF

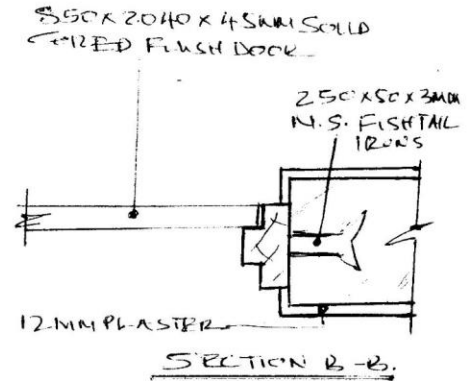
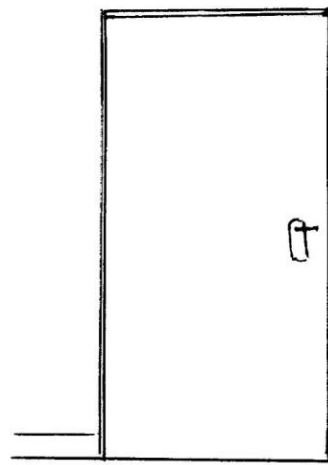


DRAWING NO 03

NOT TO SCALE



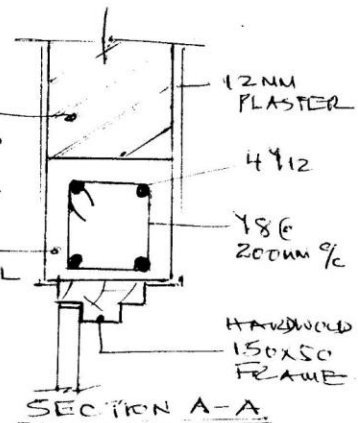
FLUSH DOOR [INTERNAL]



100x25mm HANDWOOD SKIRTING

200MM THICK SOLID CONCRETE BLOCK WALL

200x300mm INSITU LINTOL MIX 1:2:4



NOTES

IRONMONGERY: Supply and fix the following ironmongery items

1. 100mm wide brass butt hinges
2. 3 lever mortice lock
3. 38mm rubber door step
4. Automatic door closer type

A198.

5. 150mm long brass bavel bolt.

DRAWING NO 02
Not to Scale.



