



TECHNICAL UNIVERSITY OF MOMBASA

FACULTY OF ENGINEERING AND TECHNOLOGY

DEPARTMENT OF MECHANICAL & AUTOMOTIVE ENGINEERING

UNIVERSITY EXAMINATION FOR:

BTECH MECHANICAL ENGINEERING (SCHOOL-BASED PROGRAM)

EMG 2204 : COMPUTER AIDED DRAWING (PAPER 2)

END OF SEMESTER EXAMINATION

SERIES: APRIL 2017

TIME: 2 HOURS

DATE: Pick Date Apr 2017

Instructions to Candidates

You should have the following for this examination

-Answer Booklet, examination pass and student ID

This paper consists of **FIVE** questions. Attempt question ONE (Compulsory) and any other TWO questions.

Do not write on the question paper.

SECTION A (2D-Drafting and Annotation), COMPULSORY

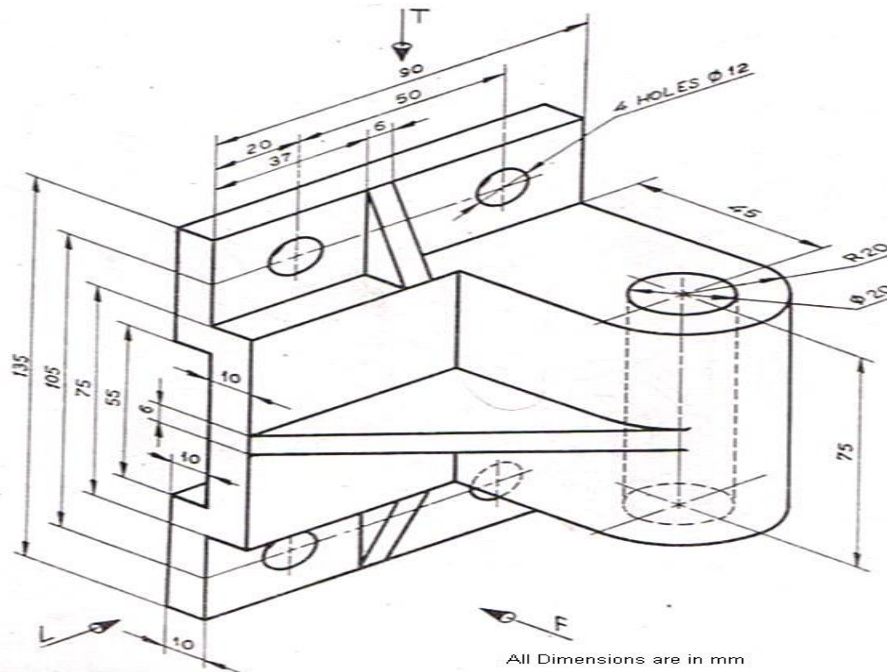


Fig. 1

Question ONE

Fig. 1 is an isometric drawing of an object. Construct a three-view third angle orthographic projection of the object and dimension appropriately. (30 Marks)

SECTION B (Isometric Drawing), ATTEMPT Q2 OR Q3

Question TWO

Construct an isometric drawing of Fig. 2 and dimension appropriately. (20 Marks)

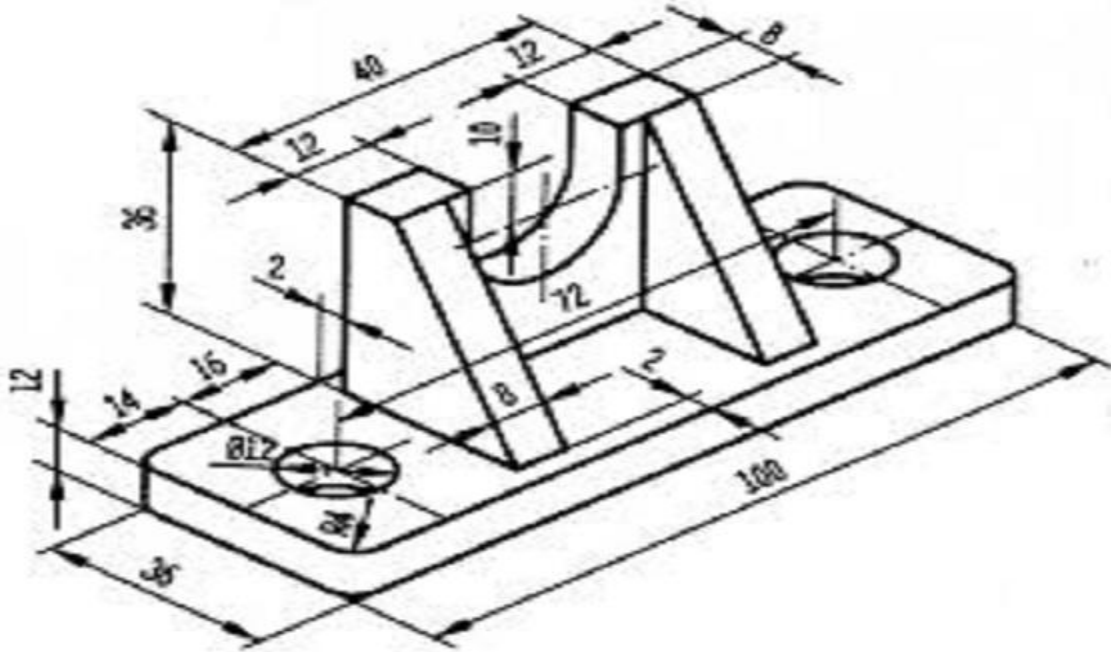


Fig. 2

Question THREE

Construct an isometric drawing of Fig. 3 and dimension appropriately. (20 Marks)

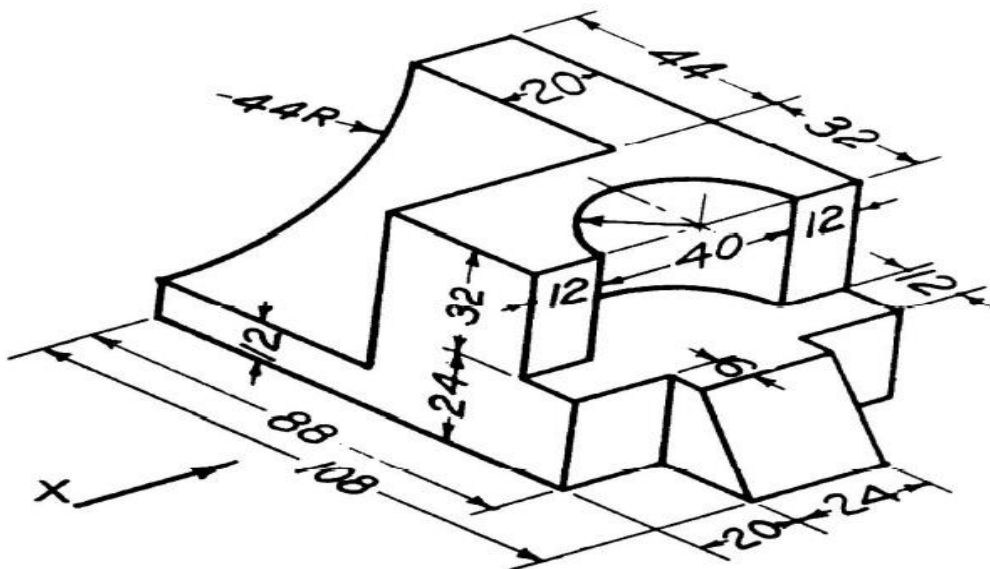


Fig. 3

SECTION C (3D-Modeling), ATTEMPT Q4 OR Q5

Question FOUR

Fig. 4(a) and Fig. 4(b) represent the top and side views of an object respectively. Construct a 3D-model in S/E isometric view and present the model in Conceptual visual style. Do not dimension. (20 marks)

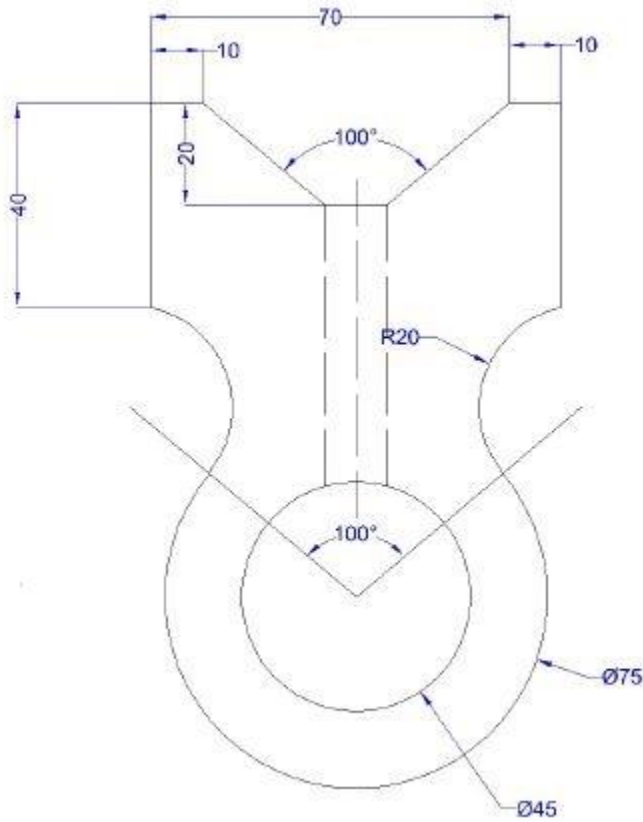


Fig. 4(a)

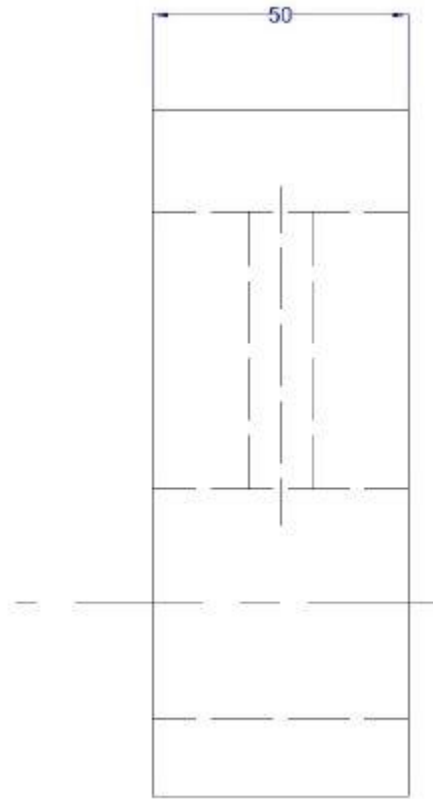


Fig. 4(b)

Question FIVE

Fig. 5(a) and Fig. 5(b) represent the top and left views of an object respectively. Construct a 3D-model in S/E isometric view and present the model in Conceptual visual style. Do not dimension. (20 marks)

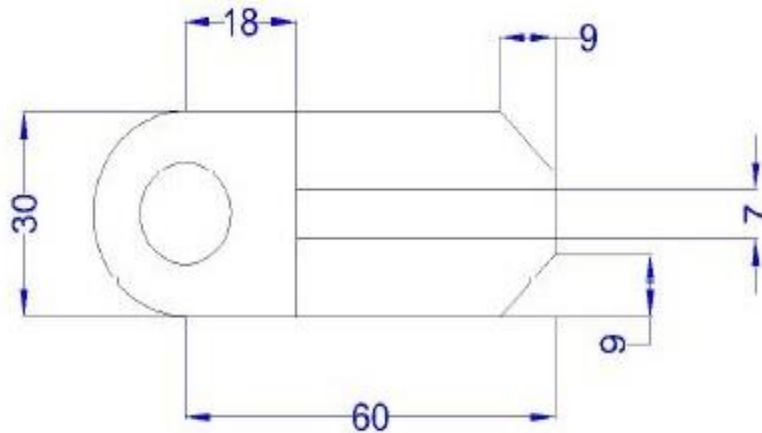


Fig. 5(a)

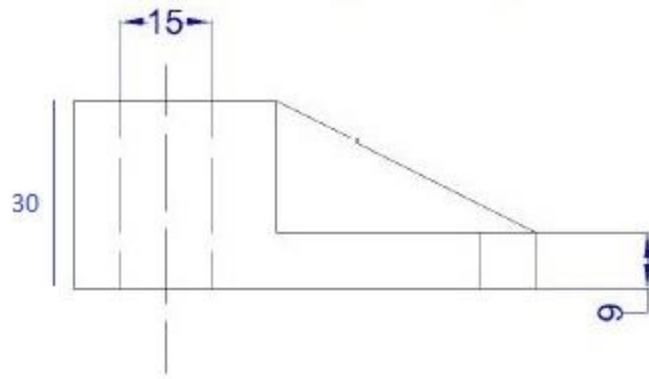


Fig. 5(b)